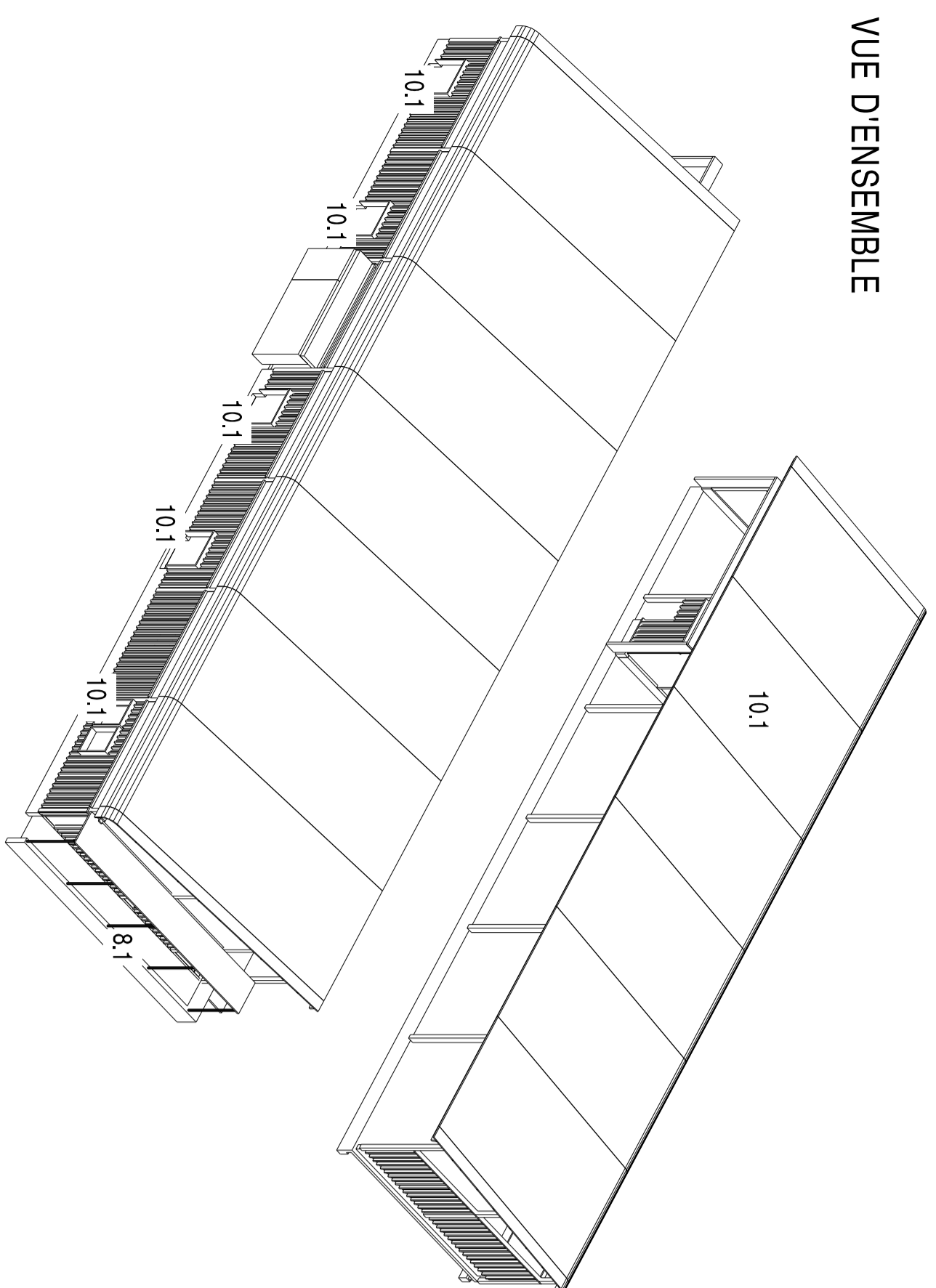
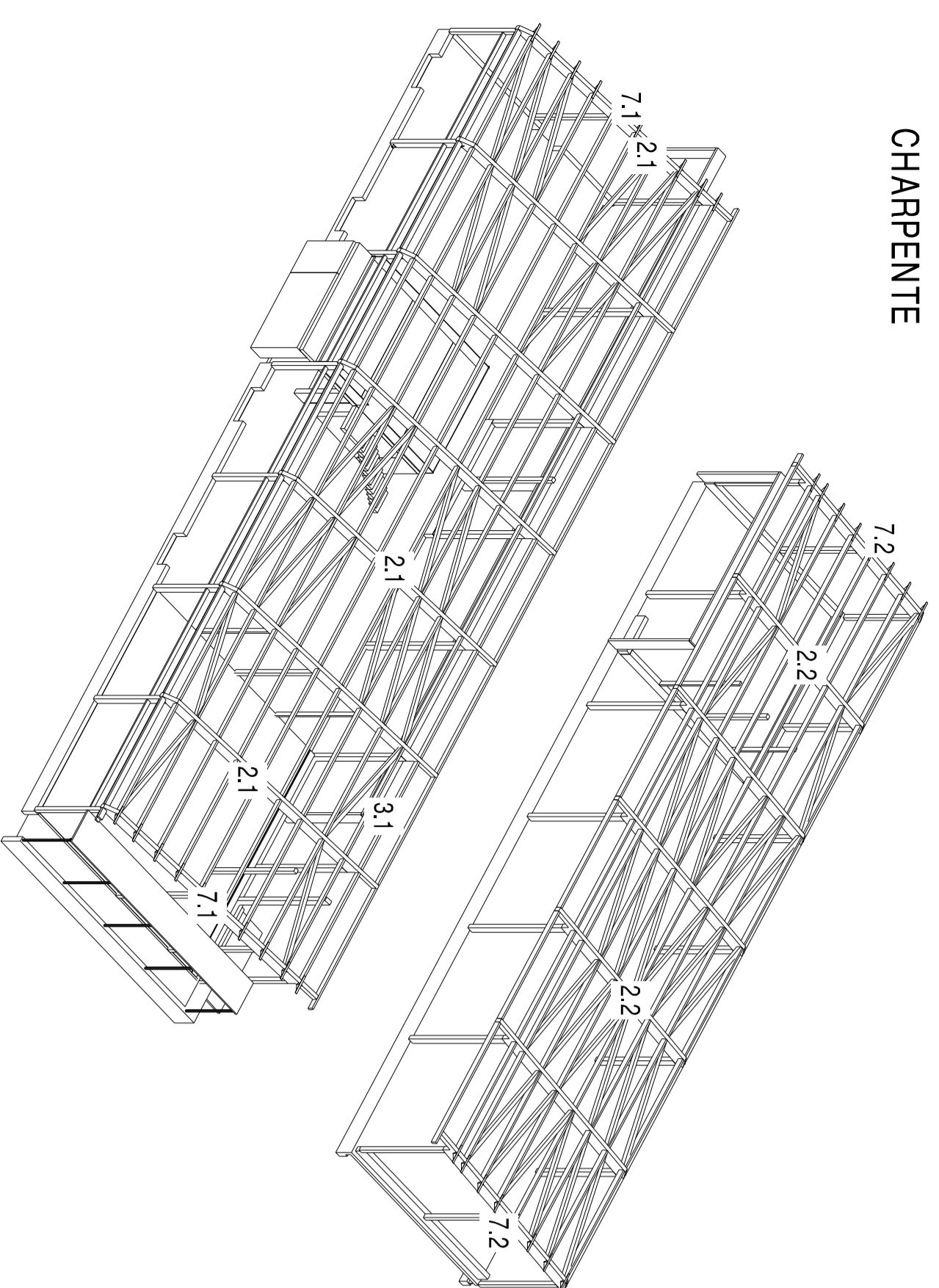


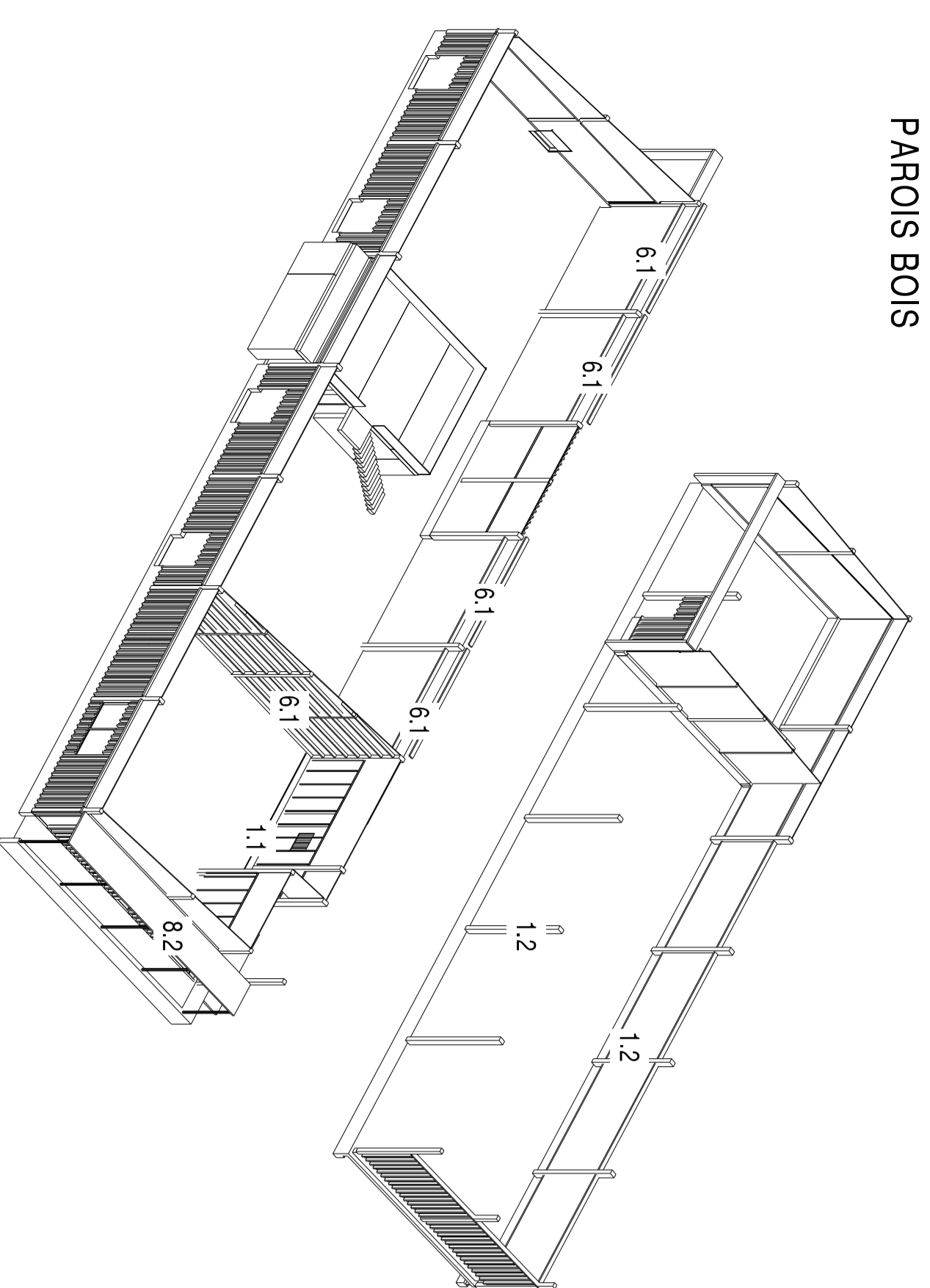
VUE D'ENSEMBLE



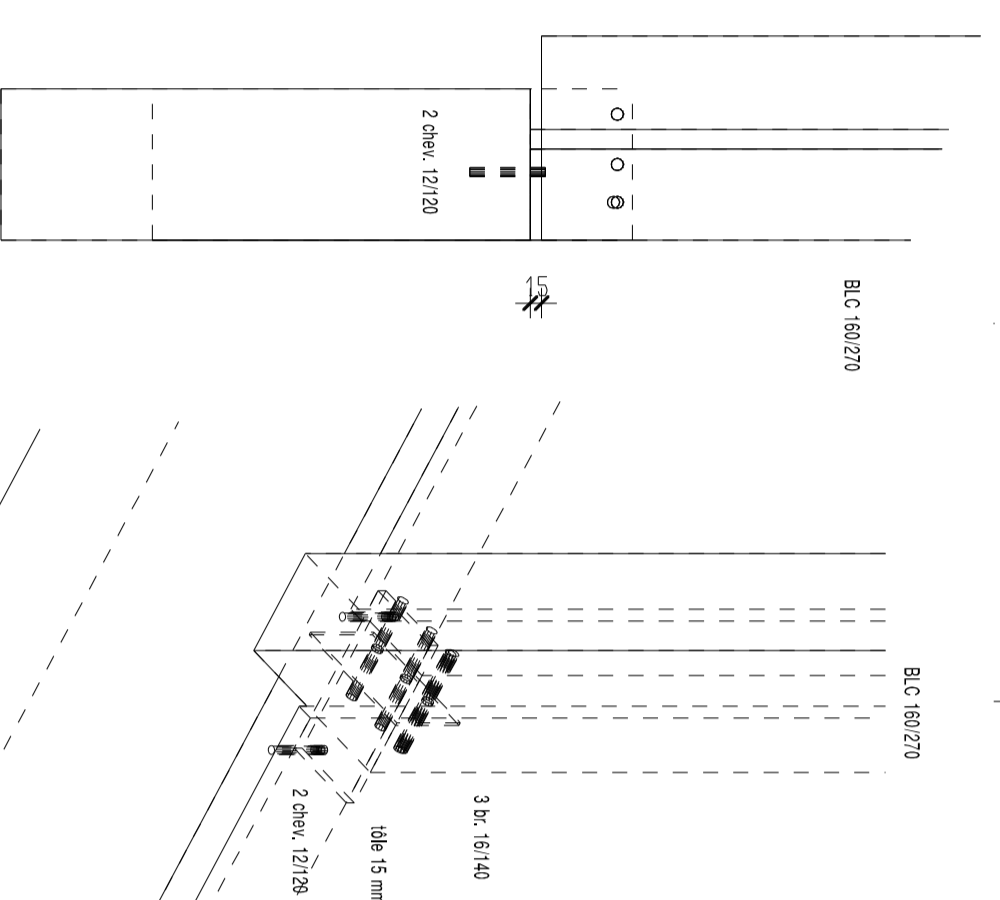
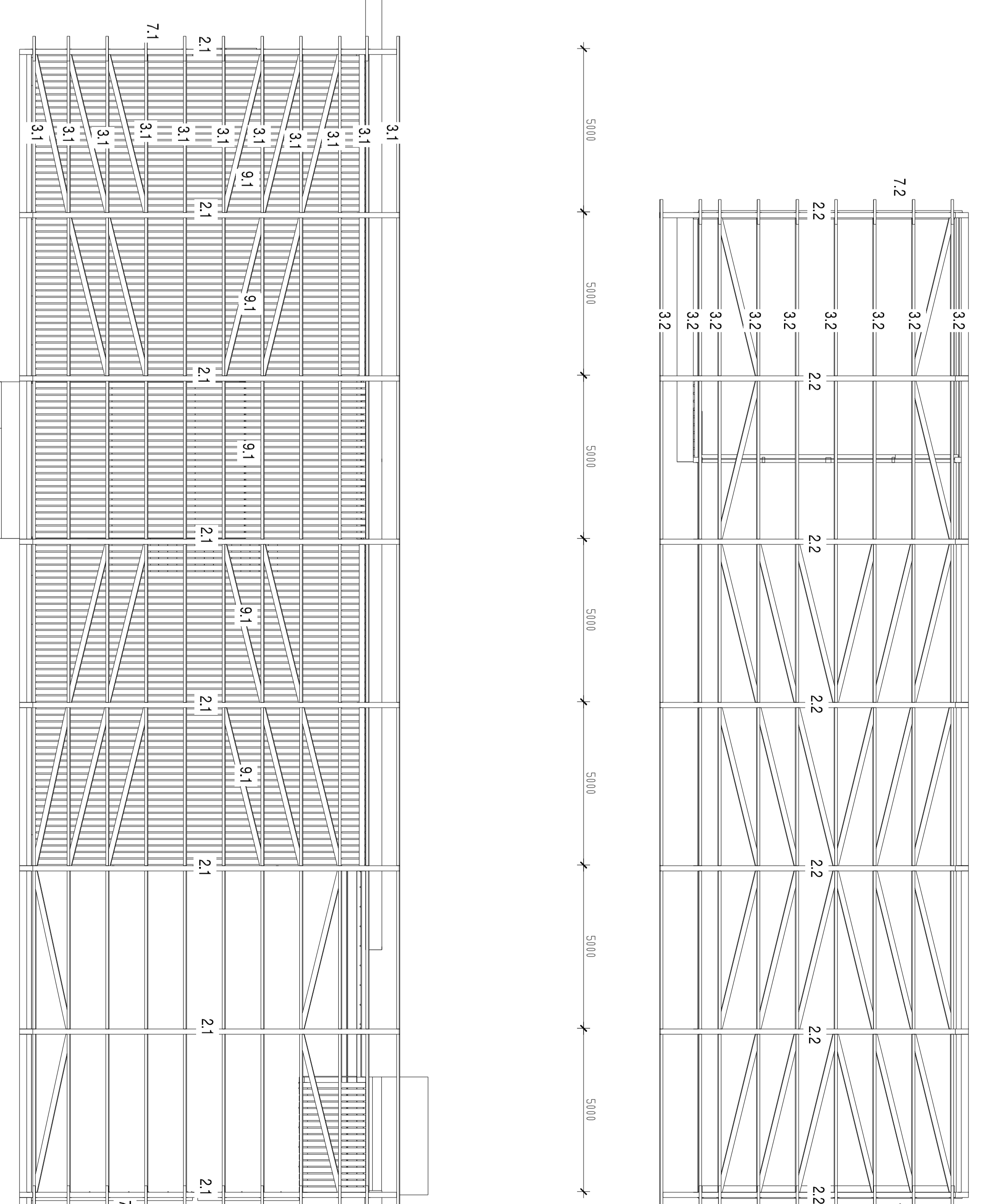
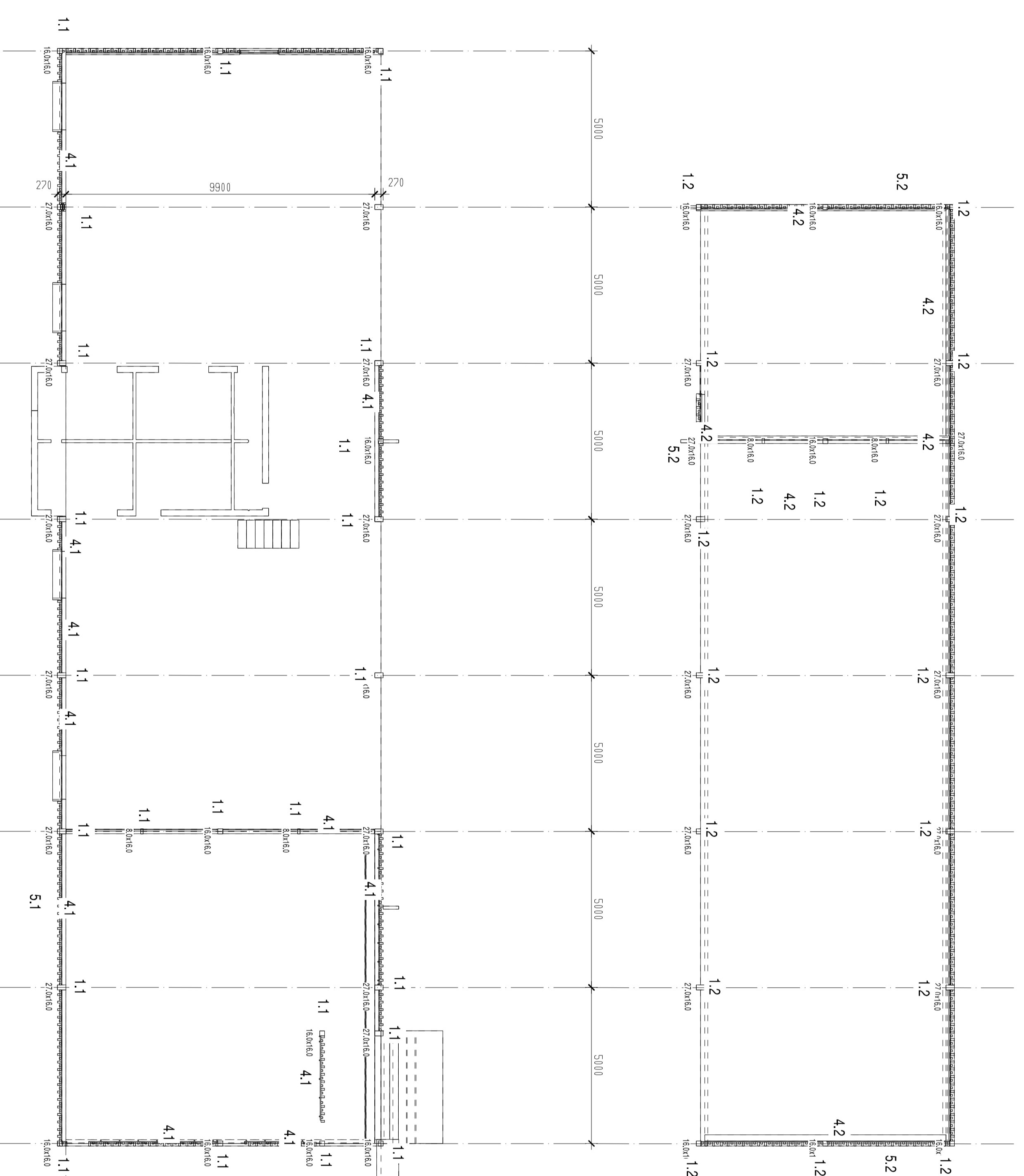
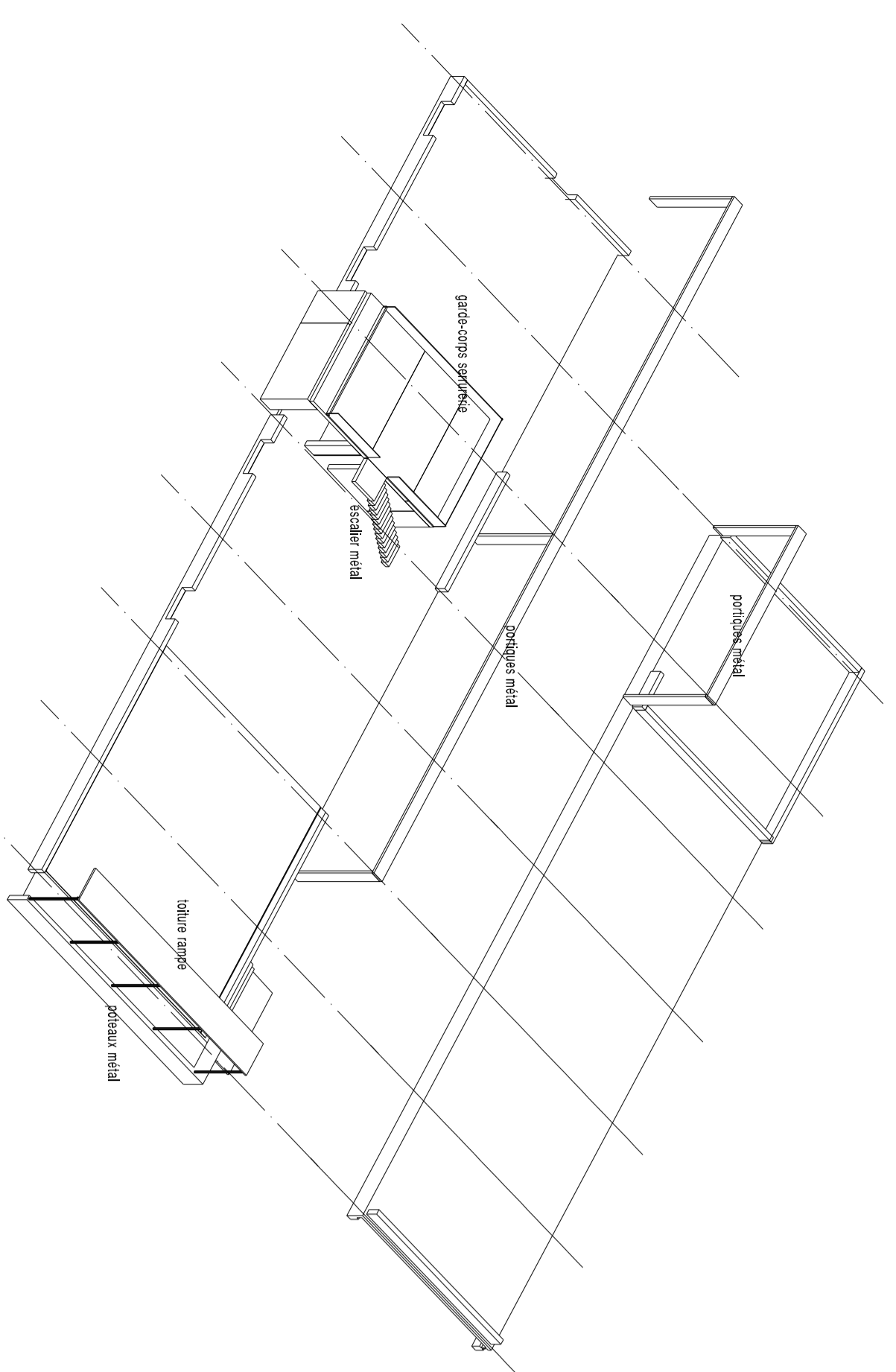
CHARPENTE



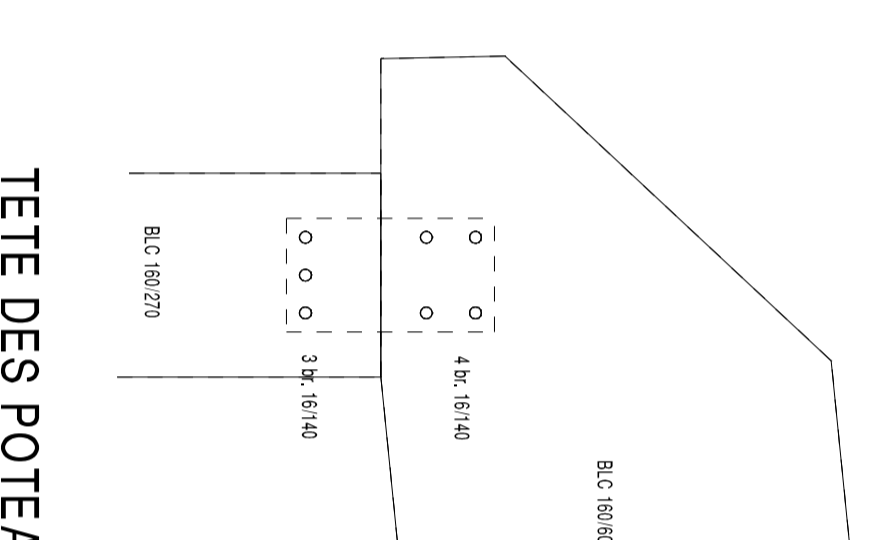
PAROIS BOIS



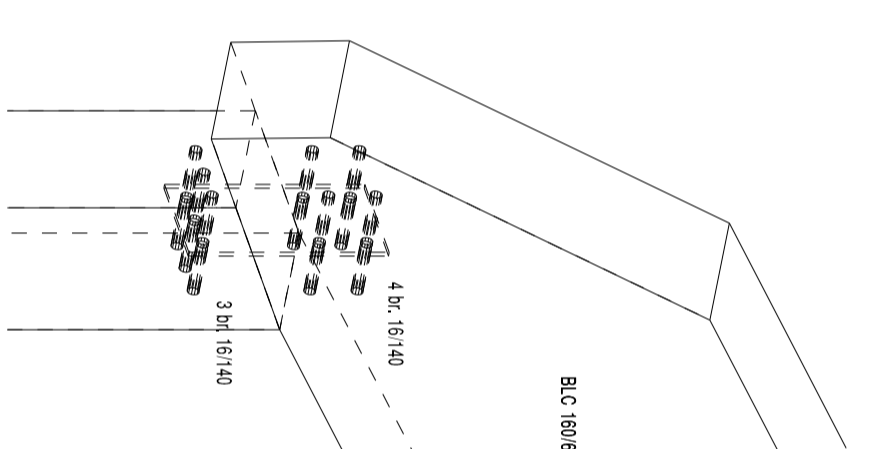
GROS-ŒUVRE  
ET SERRURERIE



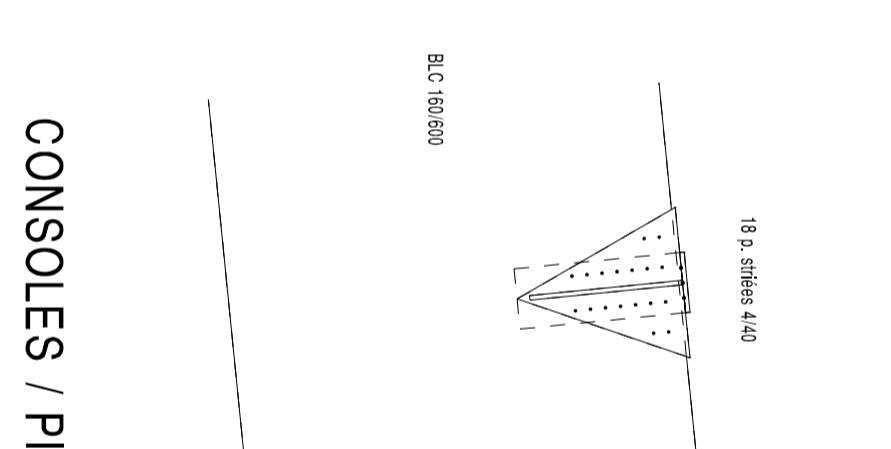
PIED DES POTEAUX  
Ech : 1/10



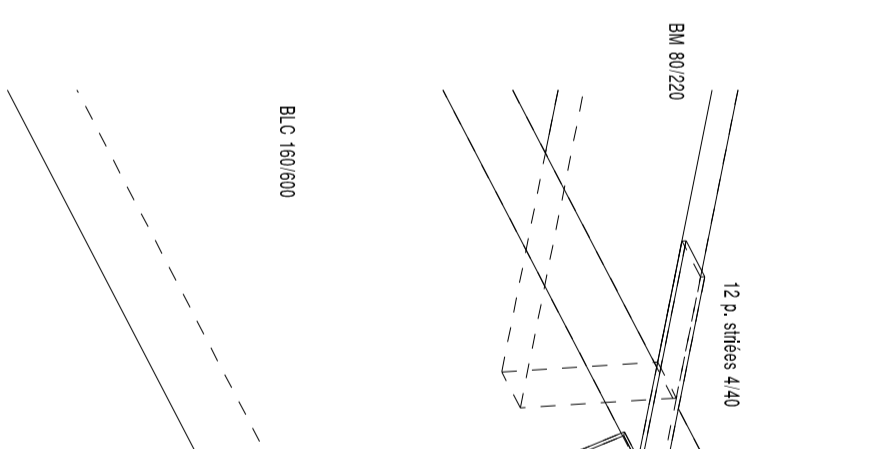
TETE DES POTEAUX  
Ech : 1/10



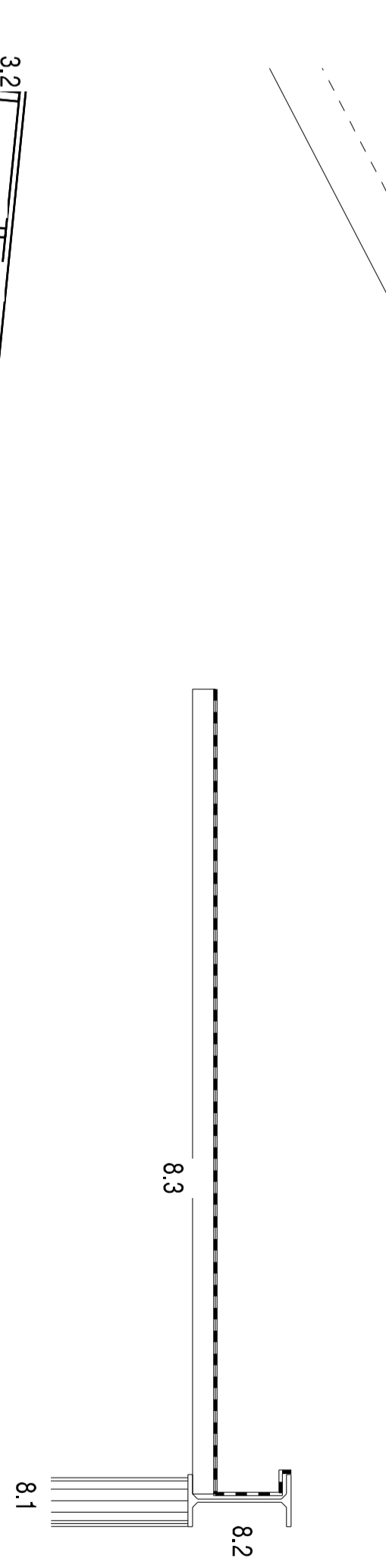
TETE DES POTEAUX  
Ech : 1/10



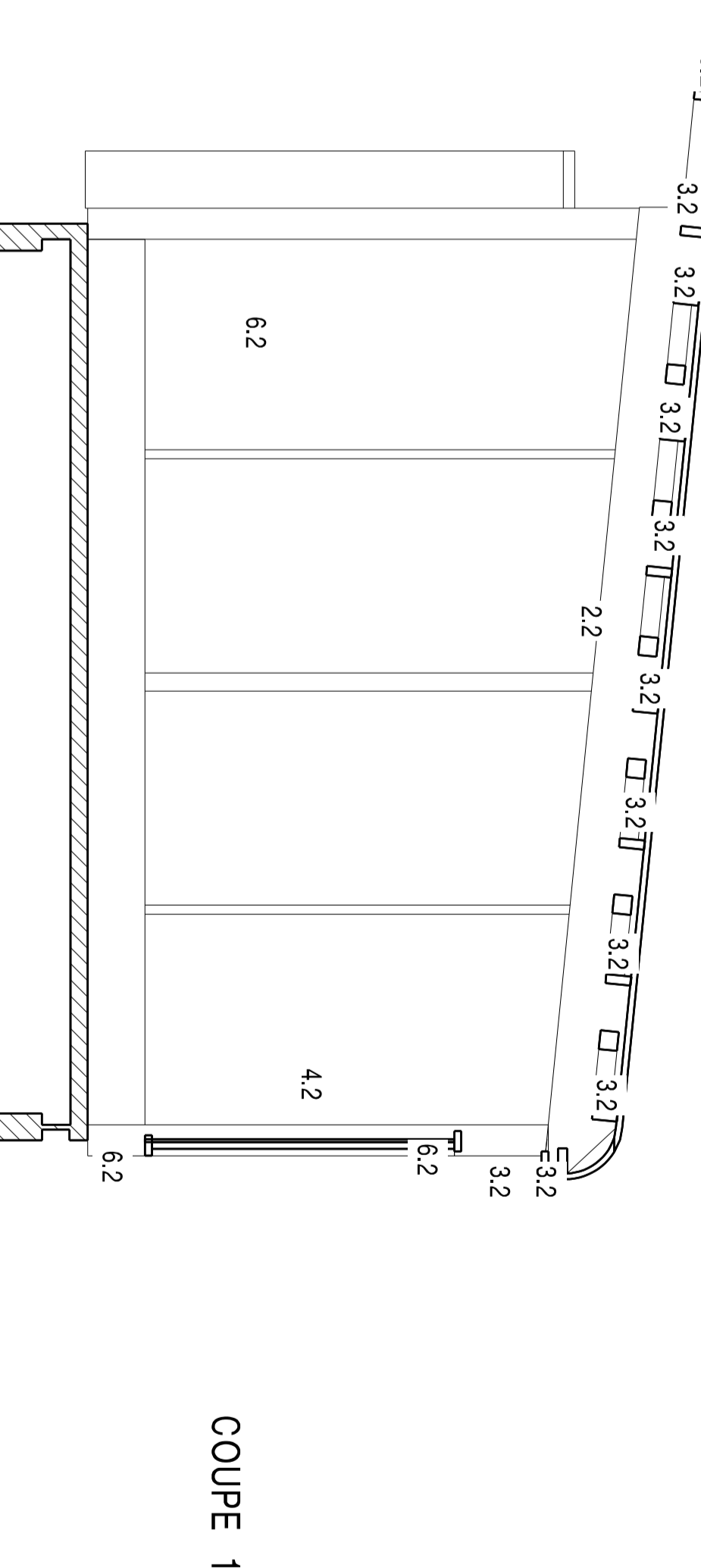
CONSOLES / PIGNONS  
Ech : 1/10



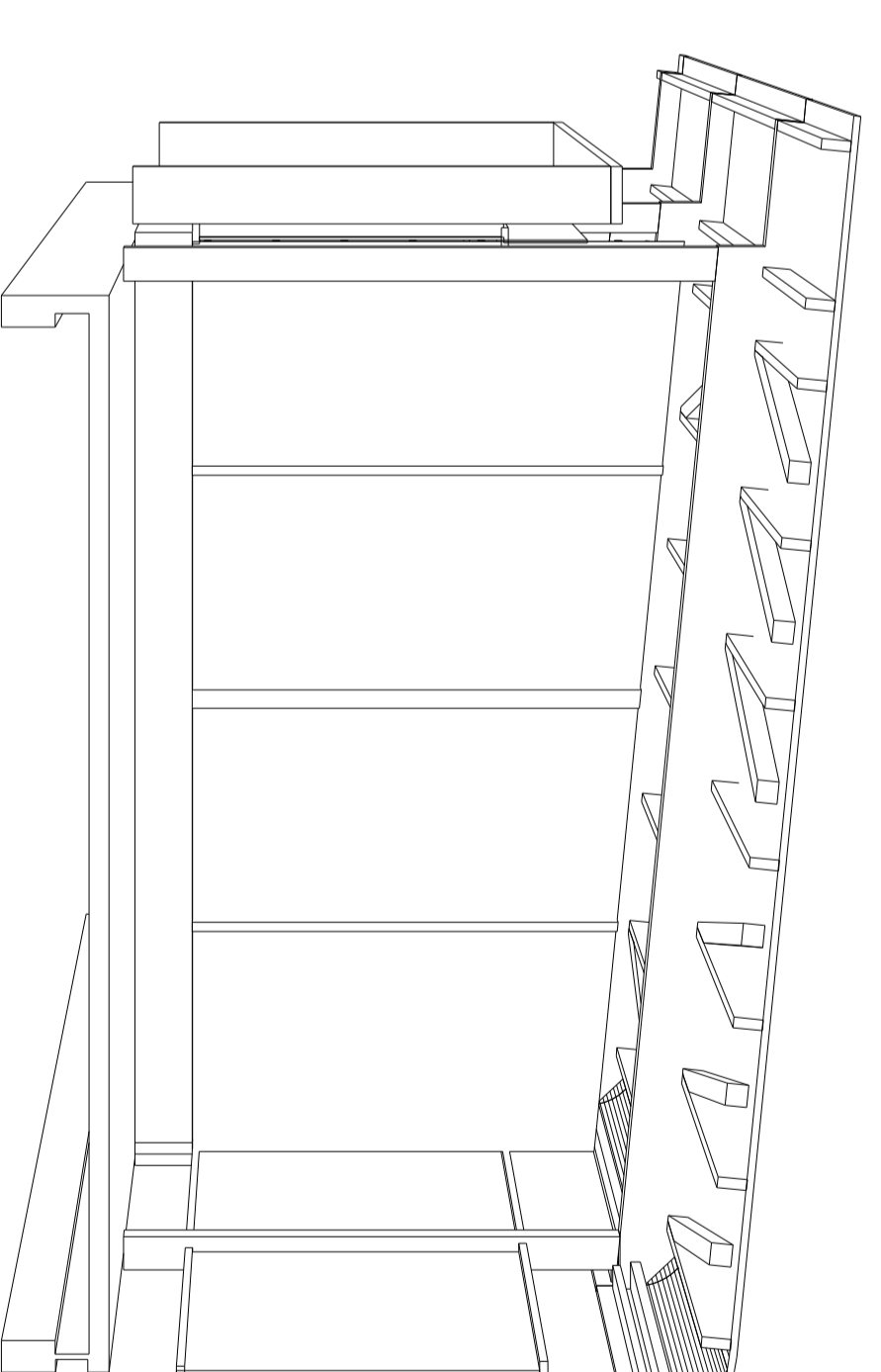
PAROIS : COUPES HOR. 1/10



TOITURE / RAMPE 1/10



COUPE 1/50



PERSPECTIVE SUR COUPE

- 1.1 poteaux L-A
- 1.2 poteaux D-G
- 2.1 appuis L-A
- 2.2 appuis D-G
- 3.1 pannes et CV L-A
- 3.2 pannes et CV D-G
- 4.1 tous-pis 28 mm L-A
- 4.2 tous-pis 28 mm D-G
- 5.1 raidisseurs L-A
- 5.2 raidisseurs D-G
- 6.1 lisses L-A
- 6.2 lisses D-G
- 7.1 consoles L-A
- 7.2 consoles D-G
- 8.1 tubes 114.3x6.1
- 8.2 PE 190 / L
- 8.3 platond 22160 A
- 9.1
- 10.1 tableaux / ouvertures 5.30

S. BARONNET  
 ARCHITECTE  
 14000 MARSEILLE  
 14 RUE DE LA  
 MARSEILLAISE  
 13001 MARSEILLE  
 TEL : 04 91 58 11 13  
 FAX : 04 91 58 11 13  
 PORT : 06 88 12 21 89  
 ALENVA (68)  
 CENTRE TECHNIQUE MUNICIPAL  
 LOT CHARPENTE : OCE  
 AXONOMETRIQUES - PLANS COUPES  
 Ech. : 1/100, 1/50, 1/10  
 PORT - REVUES - 12.20.09